



www.lghausys.com

STATICPULSE

Conductive & Static-Dissipative Tile
2017

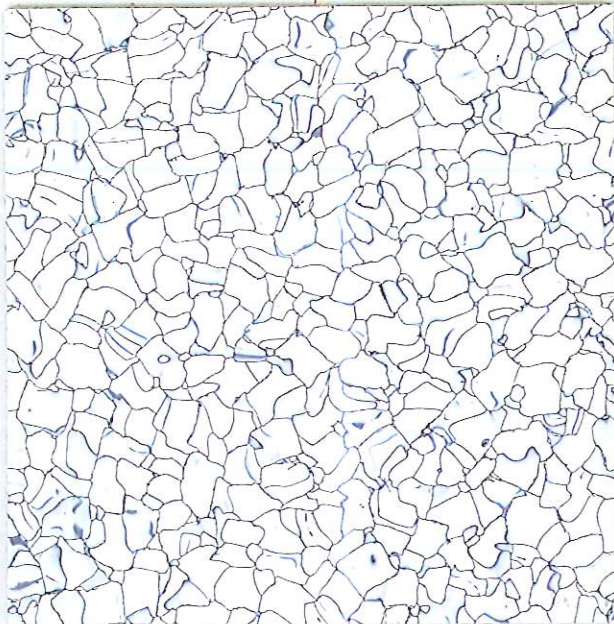


Tile

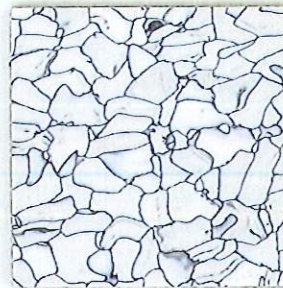
Conductive & Static-Dissipative Tile

2.0mm(T)×600mm(W)×600mm(L) / 2.0mm(T)×610mm(W)×610mm(L) 3.0mm(T)×600mm(W)×600mm(L) / 3.0mm(T)×610mm(W)×610mm(L)

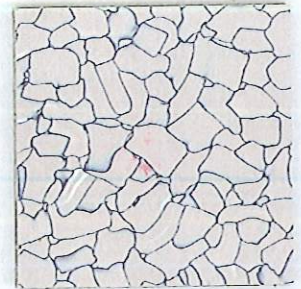
C : Conductive / SD : Static-Dissipative



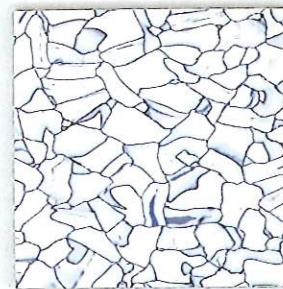
C6001 / SD6001



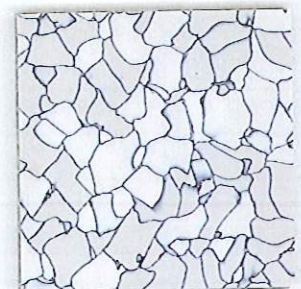
C6111 / SD6111



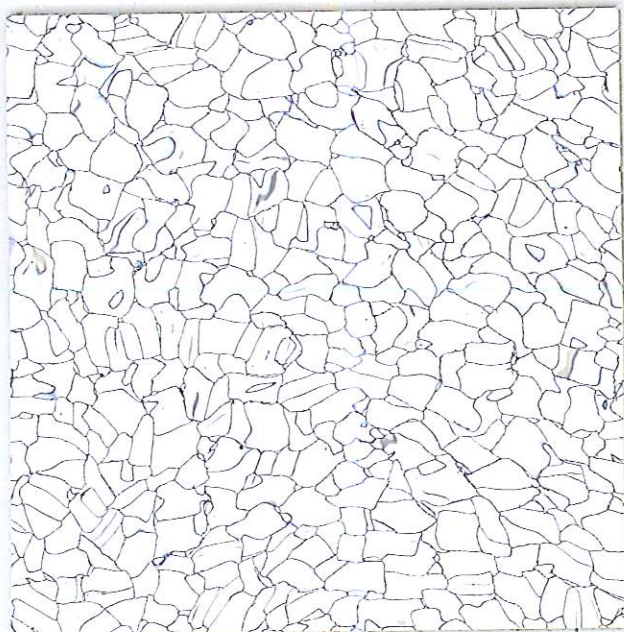
C6005 / SD6005



C601 / SD601



C6200 / SD6200



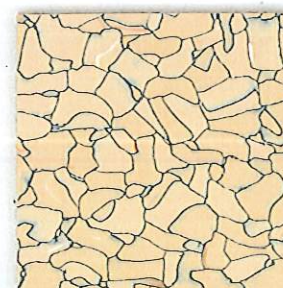
C6101 / SD6101



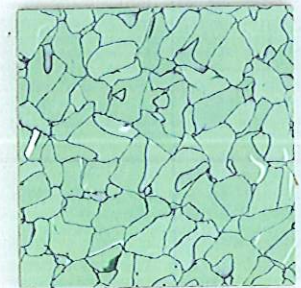
C6062 / SD6062



C6092 / SD6092



C6072 / SD6072



C6082 / SD6082

Conductive & Static Dissipative Tile

Welding Rod (8 Color)

(white) CW6101
C6001/SD6001, C6101/SD6101

(warm grey) CW6051
C6005/SD6005

(light beige) CW6011
C6001/SD6001, C6101/SD6101, C601/SD601









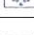

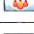






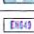


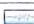
(dark grey) CW6061
C6062/SD6062

(light yellow) CW6071
C6072/SD6072

(light grey) CW6111
C6111/SD6111, C6200/SD6200

(blue) CW6031
C6032/SD6032

(green) CW6081
C6082/SD6082

	ITEM	Standard test Method	Specification	Conductive Tile	Static Dissipative Tile
	Electrical/Electrostatic Properties				
	Electrical Resistance	ASTM F 150, ESD S 7-1	Conductive: 2.5×10 ⁴ - 1.0×10 ⁶ Ω Static Dissipative: 1.0×10 ⁶ - 1.0×10 ⁹ Ω	2.5×10 ⁴ - 1.0×10 ⁶ Ω	1.0×10 ⁶ - 1.0×10 ⁹ Ω
	Static Generation	AATOC-134		0.1kV	0.2kV
	Static Decay Time	Federal Test Method 101B Method 4096	< 0.5 sec	0.01 sec	0.01 sec
Other Properties					
	Classification	ISO 10874		Class 34 / 43	
	Composition of Material	ASTM F 1700, Certificate of Compliance		Homogeneous	
	Thickness	ASTM F 398, EN 428	as specified ± 0.13mm	Meet Standard	
	Nominal Sizes	ASTM F 2055, EN 427	≤ 0.4 mm/305 mm	Meet Standard	
	Squareness	ASTM F 2055	maximum 0.25 mm	Meet Standard	
	Residual Indentation	ASTM F 1914 EN 433	Average Less than 8%, max single reading 10%	< 8 %	
	Flexibility	ASTM F 137, ISO 24344	25.4mm mandrel, no crack or break	25.4mm mandrel, no crack or break	
	Dimensional Stability	ASTM F 2193, EN 434	< 0.51 mm/305 mm	Meet Standard	
	Resistance to Chemicals	ASTM F 925	No more than a slight change in surface dulling, surface attack or staining	No more than a slight change in surface dulling, surface attack or staining	
	Reaction to Fire	EN13501-1		Bfl-s1	
	Static Electrical Propensity	EN 1815		< 2kV	
	Critical Radiant Flux	ASTM E 648, NFPA 253		Class 1 (> 0.45 W/cm ²)	
	Smoke Density	ASTM E 662	< 450	< 450	
	Resistance to Heat	ASTM F 1514	ΔE < 8 ave, max	Meet Standard	
	Resistance to Light	ASTM F 1515	ΔE < 8 ave, max	Meet Standard	
	Color Fastness	EN ISO 105 B02	6 minimum	At least 6	
	Thermal Conductivity	DIN 52612, ISO 12677		0.309 W/(m.K)	
	Slip Resistance	DIN 51130		R9	
	Wear Resistance	EN 660-2		Group M	
	Castor Chair Test	ISO 4318		No Change	
	Fulfills product requirements	EN 643		Yes	
	Underwriters Laboratories	UL 773		Meet UL Standard	
Warranty					
	Free from defects in Workmanship and materials*			Five years	
	Conductivity*			Lifetime	

* The above technical data is subject to modification for the benefit of further improvements.

* LG Hausys EDS Control Tile is executive warranty is valid only when tile is installed with LG Hausys ESD Control Tile adhesive.

Benefits

- Consistent and stable electrical properties
- Phthalate FREE plasticizer
- Heavy Metal FREE

Accessories

Accessories	Size	Packing	Remarks
Conductive adhesive	15Kg/EA	15Kg/EA	code: VIP0150-01
Conductive Wax	3.75t/EA	3.75t/EA	code: VIPC002-01
	18.75t/EA	18.75t/EA	code: VIPC002-02
Welding Rod	4mm \times 100m	100m/Roll	code: WELxxxx-01
Copper foil strip	0.03(T) \times 14mm(W) \times 100m	100m/Roll	code: VPJTAPE-01



LG Hausys HEADQUARTER One IFC 10 Gookjegeumyoong-Ro, Yeouido-Dong, Yeongdeungpo-Gu, Seoul, 150-876, Korea Tel +82-2-6930-0907 Fax +82-2-6930-0903

GLOBAL NETWORK

ATLANTA (LG Hausys America, Inc.)

900 Circle 75 Pkwy Suite#1500, Atlanta, USA, GA 30339 TEL : 1-678-486-8233

TIANJIN (LG Hausys Tianjin Co., Ltd)

12, Quanta Road, Wuging DEV AREA, Tianjin Hitech Industry Zone, Tianjin, China
TEL : 86-22-8212-5558

FRANKFURT (LG Hausys Europe GMBH)

Lyoner str 15, Atricom C6, D-60528 Frankfurt / main, Germany TEL : 49-69-58302-9412

SHANGHAI (LG Hausys Trading Co., Ltd)

19F Magnolia Plaza No.777 Hongqiao Rd, Xuhui District, Shanghai, China, 200030
TEL : 86-21-5241-6600

MOSCOW (LG Hausys Russia, LLC)

8th Floor, Lesnaya Plaza, Bld. 4, 4th Lesnoy Pereulok, Moscow, 125047, Russia
TEL : 7-495-663-3958

NEW DELHI (LG Hausys India Private Ltd)

Plot #11 Sector 44 Gurgaon Haryana — 122001, India
TEL : 91-124-4212590

TAIPEI (Taipei Office)

2F, NO. 69, Sec. 2, Tiding Ave., Taipei 11493, Taiwan TEL : 886-2-2658-6370

ISTANBUL (Istanbul Office)

Büyükdere cad. Maslak Nuru Plaza No : 255A Blok 8.Kat 34398 Maslak, Istanbul, Turkey
TEL : 90-212-285-1101

TOKYO (Tokyo Office)

Kyobashi Trust-Tower 14F, 2-1-3 Kyobashi, Chuo-ku, Tokyo, 104-0031, Japan
TEL : 81-3-5299-4533

JAKARTA (Jakarta Office)

Tower One at The City Center (TCC) Batavia 18th Floor, Unit 2B
KH. Mas. Mansyur Kav. 126, Kel. Karet Tengsin, Kec. Tanah Abang, Jakarta Pusat, 10220, Indonesia TEL : 62-21-2967-5043

BANGKOK (Bangkok Office)

19th Floor, Sermit Tower, 159 Asoke, Sukhumvit 21 Rd, Bangkok 10110, Thailand
TEL : 66-2-665-7417-8

SAO PAULO (São Paulo Office)

Av.Dr.Chucri Zaidan,940 - Torre - 180 Andar Vila Cordeiro - CEP 04583-110 - Sao Paulo/SP - Brasil TEL : 55-11-2159-7105

DUBAI (Dubai Office)

Dubai Internet City Building @3, Dubai, United Arab Emirates
TEL : 971-4-553-1452